

● ALL IN ONE



# W52

*The 5-axis milling machine  
for dry and wet machining*

- ✓ All materials available
- ✓ Excellent milling results
- ✓ Large spindle and high rigidity

5  
Axes

18  
Tools

1  
Disc

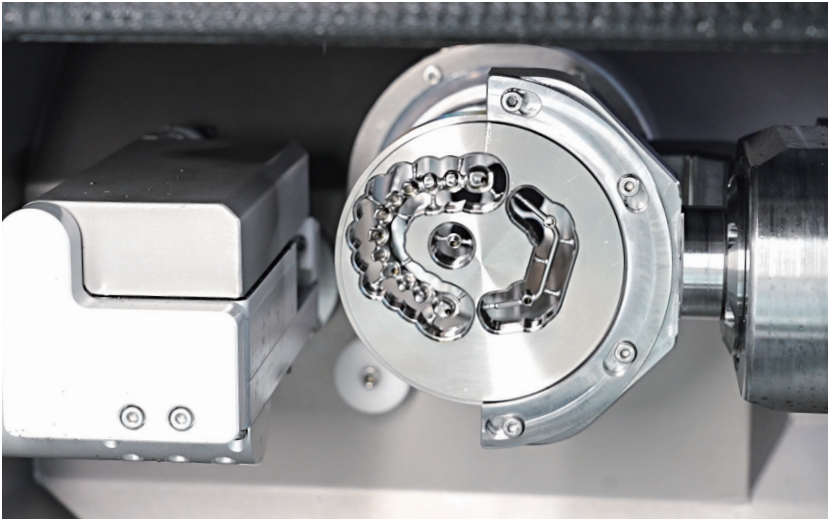
3  
Pre-milled

6  
Blocks

Dry  
Wet

# Highlights!

Best-selling all-round milling machine.



## ALL in one: Maximize your profits

The W52 is a dry and wet integrated milling machine that can complete 90% of dental cases. It is capable of milling a range of materials, including titanium discs, pre-milled blanks, glass ceramics, zirconia and more.

The investment cost is reduced as only one machine is needed.



## Excellent milling results

The W52 is the machine you need for powerful milling and good precision. It will deliver excellent results when milling various dental cases. We have conducted more optimisation and testing in the details of milling, reducing the polishing process after milling, and saving production time.



# FEATURES!

TRUST THE CHOICE OF MARKET USERS



## High accuracy

- C5 grade high precision ball screw
- P grade guide rail
- High resolution servo control system
- 5  $\mu$ m repetition accuracy
- Ball bearing made of hybrid ceramic for the highest concentricity  $<3\mu$ m



## More Stable

- 2.5kW / $\Phi$ 62mm powerful spindle
- Professional water-cooled spindle, longer life
- Integrated casting body, milling stable
- Stainless steel A B axis support, strong intensity



## Maximum variety

- 98\*35mm disc of titanium, zirconia, pmma...
- 6 glass ceramics and 3 pre-milled holder
- Large rotation angle, A axis $\pm 360^\circ$ , B+90-30°
- Automatic Tool Magazine for 18 tools



## More features

- Automatic calibration
- 90°milling for denture
- Automatic protection of tool magazine



## Technical Support

- After-sales service within 24H
- Face to face technical training



# DETAILS!

## 100% UNDERSTANDING OF THE W52

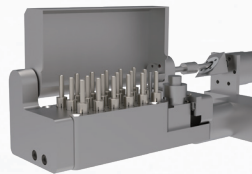
### ✓ Powerful Spindle

2.5KW  $\varnothing 62\text{mm}$   
Water cooling



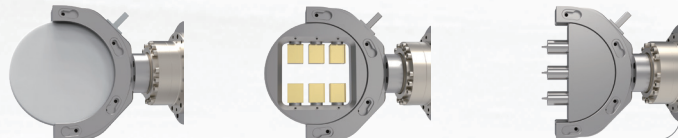
### ✓ Automatic changing tools module

18 tools  
Tool magazine protective cover.  
Tool lifetime monitoring system.



### ✓ Holders

A variety of easily switchable holders.



### ✓ Intelligent

Remote monitoring system.



### ✓ Automatic calibration.

### ✓ One-piece cast aluminum structure.

### ✓ Integrated base cabinet.

\*Internally accommodates  
water cooler and water tanks.



## Millable Material

Zirconia	PMMA	PEEK   Wax
Titanium	Glass ceramics	Composite

## Applications



Crown/ Bridge



Inlays/Onlays



Abutments



Veneer



Model cast



Denture



Occlusal splint


Screw-retained  
bridge


Surgical guide



Implant bar

## Holder Types



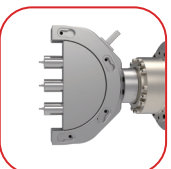
### Half-open blank holder(C-CLAMP)

- Standard
- Suitable for processing  $\varnothing 98\text{mm}$  zirconia discs, resin discs, titanium discs, etc
- Enables 5-axis milling up to  $90^\circ$  axis adjustment
- Maximum material thickness 35mm



### Block holder

- Standard
- 6 positions, suitable for blocks of glass ceramics, resin and zirconia
- Glass-ceramic block size I13/C14/C16/B32/B40 available
- PMMA and zirconia block size
- 18\*13\*15/20\*15\*14/20\*15\*19/40\*15\*14/40\*15\*19/55\*15.5\*19 available



### Premill Abutment holder

- Standard
- 3 positions, Suitable for pre-milled blank
- Current available Systems: Arum, Geo, Medentika
- Other systems continue to be developed

## Base Cabinet (Standard)



Water cooling machine.

Water tank.

### Parameters

Size	700*650*900mm
Weight	80kg

## Vacuum Cleaner (Optional)

### Parameters

Power	360W(220V~50/60HZ)
Size	260mmx420mmx450mm
Capacity	3.6L



## Milling Burs

### Zirconia milling burs

T1 2.0/6.0mm  
Roto, Diamond coated



T2 1.0/6.0mm  
Roto, Diamond coated



T3 0.6/6.0mm  
Roto, Diamond coated



T4 1.5/6.0mm  
Flat, Diamond coated



T5 0.3/6.0mm  
Roto, Diamond coated



### Resin milling burs

T6 2.0/6.0mm  
Roto, Diamond coated



T7 1.0/6.0mm  
Roto, Diamond coated



T8 0.6/6.0mm  
Roto, Diamond coated



T9 1.5/6.0mm  
Flat, Diamond coated



### Titanium milling burs

T1 3.0/6.0mm  
Roto, Diamond coated



T2 2.0/6.0mm  
Roto, Diamond coated



T3 1.5/6.0mm  
Roto, Diamond coated



T4 1.0/6.0mm  
Roto, Diamond coated



T5 0.5/6.0mm  
Roto, Diamond coated



T6 2.0/6.0mm  
End mill, Diamond coated



T7 1.5/6.0mm  
End mill, Diamond coated



T8 1.5/6.0mm  
End mill, Diamond coated



T9 2.5/6.0mm  
Drill, Diamond coated



T10 1.5/6.0mm  
Drill, Diamond coated



T11 2.0/6.0mm  
Flat, Diamond coated



T12 1.0/6.0mm  
Flat, Diamond coated



T13 2.0/6.0mm  
Flat, Diamond coated



### Glass ceramic milling burs

T15 2.5/6.0mm  
Roto, Diamond coated



T16 1.0/6.0mm  
Roto, Diamond coated



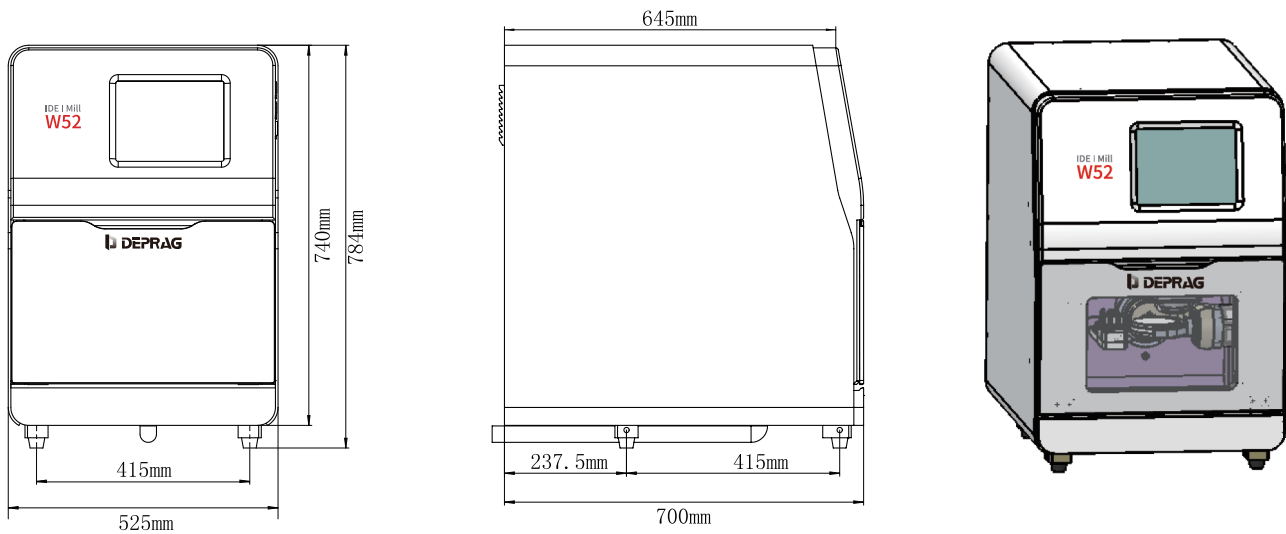
T17 0.6/6.0mm  
Drill, Diamond coated





General	
Processing mode	Dry&Wet
Millable material	Zirconia, Glass ceramics, Plastics   Wax, PEEK, Composite, Titanium
Applications	Crown   Bridge, Veneer, Inlay   Onlay, Abutment, Denture, Screw-retained bridge, Model cast, Occlusal splint, Surgical guide, Implant bar
Power	220V/3.2kW
Dimension	525 × 700 × 784 mm
Weight	150 kg
Air supply pressure	>0.5 MPa
Air flow	>90 L/min
Water tank capacity	10L
Structure parameters	
Basic construction	Aluminium
Number of axes	5
Rotary axis A-axis	360°
Rotary axis B-axis	+30°~-90°
Tool	18
Spindle	
Speed	60,000 rpm
Power	2.5kW
Positioning/Repositioning accuracy	0.01/ 0.005 mm
Collet	Φ6 mm
Cooling method	Water cooling
Approvals	
All models	CE
North America model	FCC
Scope of delivery	
CAM Software Adaptation	Millbox / Hyperdent / WorkNC available
Clamps	Half-open blank holder(C-CLAMP)
	Block holder
	Premill abutment holder

## W52 Outline Dimensions



DEPRAG (Zhengzhou) Dental Technology Co., Ltd.

Web: [depragdental.com](http://depragdental.com)

Email: [info@depragdental.com](mailto:info@depragdental.com)

Add: No.14, No.8 Floor, Building 7, No.289 West Third Ring Road, High-tech Industrial Development Zone, Zhengzhou City, Henan Province, China.